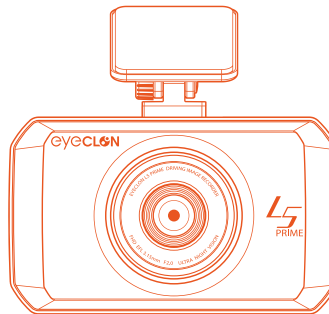




L5 PRIME USER'S MANUAL

EYECLON Full HD Driving Image Recorder



www.eyeclon.com

- Copyright laws prohibit this manual to be copied, modified or translated without the written consent of Eyeclon.
- The contents in this printed manual may be updated, changed or modified without notice.
For latest L5 PRIME operating manual updates please see www.eyeclon.com
- Eyeclon has the right to change or modify the product and manual contents at anytime without prior notice for improvements.

< NOTE >

- Customer is responsible for obeying all Federal, State, and Local laws concerning the operation of the L5 PRIME device.
Regulations for use may vary by region.
- Eyeclon is not responsible for damages that can occur from using unauthorized parts and accessories.
- The L5 PRIME device may NOT record videos of all accidents due to device settings and operating environments.
- The Micro SD card should be checked periodically for errors due to wear and replaced as needed.
- Properly install the L5 PRIME so that it does not interfere with the driver's vision.

1. DIR : Driving Image Recorder
2. LCD : Liquid Crystal Display
3. FHD : Full High Definition
4. TFT : Thin Film Transistor
5. GUI : Graphical User Interface
6. PIP : Picture In Picture
7. LED : Light Emitting Diode
8. G-SENSOR : Gravity Sensor
9. GPS : Global Positioning System
10. Micro SD : Micro Secure Digital
11. ADAS : Advanced Driver Assistant System
12. LDWS : Lane Departure Warning System
13. FCWS : Forward Collision Warning System
14. FVSA : Forward Vehicle Start Alarm

1. Warning and Caution	5
2. Product Features	9
3. Product Overview	12
4. Device Installation	17
5. Basic Operation	24
- Using the Touch Screen	
- Voice Guide Scenario	
- LED Indicator Light	
- File List Management	
- Firmware Update	
6. APP Operation	42
7. EYECLON Viewer	53
8. Others	58
- Product Specifications	
- Troubleshooting	
- Warranty	



01

Warning and Caution



These cautions are provided for user's safety and prevent damages in the device.

Please take the time to read the manual for proper product usage.

 Warning	Information to prevent factors that can cause physical damage
 Caution	Information to prevent service errors or system damage

Warning

- Do not disassemble, repair, or remodel the device - this can cause an electric shock.
- Unplug the power cable if you smell something burning , smoke coming out or anything unusual.
- Do not spray water or liquid on the device as the device will not function properly.
- Handle the device with care.
- Plug the power cable all the way in to make sure it is connected to the device.
- Do not use damaged power cable.
- Do not cut, bend, or mishandle the power cable.
- Place the device and the cables away from heat or expose to high temperature.
- If the device is not being used for a long period of time disconnect the power cable from the main device.
as this can cause battery discharge in the vehicle.
- Do not use the device next to flammable liquids or gas.
- It is dangerous to operate this device while driving.
- Use only the voltage that is provided for this device.
- Do not apply extreme force and place heavy items on the device and the power cable.
- Do not use wet hands when operating this device.



- Always keep the camera lens cleaned.
- Make sure the device is firmly mounted during installation as it has a tendency to shift when driving over speed bumps or unpaved roads.
- If the device breaks, call or bring it to a service center.
Do not touch the device as your hands might get hurt from the broken parts.
- Do not use the device for a long period of time with the vehicle's engine turned off.
- Collision recording may not be enabled if the impact is very minor.
- Install the hardwire cable through a professional installer.
- Use this device only with the original parts provided from the manufacturer.
- Reception of the GPS signal can be affected by the weather, environment, or road conditions.
- Install the device where it does not interfere with the driver's view.
- Do not apply excessive force on the Micro SD card or insert it in the wrong direction.
- Store Micro SD card separately when an accident occurs or if the device is not operating properly.
- Stay away from parking in areas with direct sunlight.
- The resolution quality of the video can be affected by the environmental conditions.
- Maintain the device and the power cable in a safe area.
- Do not use the device in high temperature or humidity.
- The recommended operating temperature is $-20^{\circ} \sim 60^{\circ}\text{C}$ / $-4^{\circ} \sim 140^{\circ}\text{F}$.
- Windows of the vehicle should be always cleaned to use the device at best.
- Contact customer service if you feel the device is not working properly.



- Do not use a pin or a nail to push the LCD.
- Do not use excessive force when using the control buttons.
- Do not use chemicals to clean the device.
- Keep the product away from children and pets.

02

Product Features

■ Wi-Fi Connectivity

Smartphone APP and device connectivity. Use the APP to see real time live screen and recorded files.

■ Sony Exmor R Sensor

Provides clean and clear video quality.

■ Full HD Resolution

FHD (1920x1080) resolution for both front / rear cameras.

■ 3.5" TFT LCD

Provides high clarity and extreme brightness.

■ Format Free Technology

Provides automatic memory format and maximizes the stability and minimizes file errors of Micro SD Card.

Automatically overwrites files when storage capacity is needed.

■ PIP Multi Screen

Multi Screen feature allows you to view front / rear view screens simultaneously.

■ Audio / Voice Guide

Provides voice guide and alert sounds / messages.

■ Micro SD Card Format

Micro SD card can be formatted directly using the device

■ Various Recording

Continuous, Incident-Continuous, Incident-Parking, Parking, Manual Recording types.

■ Battery Discharge

Measures the voltage (battery) real time and prevents the vehicle from being discharged.

■ Operation Temperature Sensor

Automatically senses over heating and high temperature of the devices and shuts off the power for protection.

■ PC Viewer

PC Viewer for Windows is used to watch recorded videos.

■ Location and Speed Limit Sensor

Provides information about the vehicle's location and speed.

Compatible with Google Map and allows to check travel routes.

※ This feature operates if GPS is connected.

■ Lane Departure Warning System (LDWS)

Alerts the driver if the vehicle is outside of its lane.

■ Forward Collision Warning System (FCWS)

Alerts the driver to avoid collision with the front car when the vehicle is too close.

※ This feature operates if GPS is connected.

■ Front Vehicle Start Alarm (FVSA)

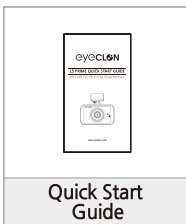
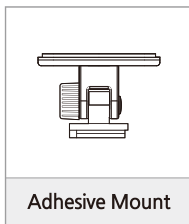
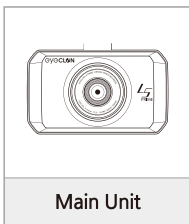
Alerts the driver when the front vehicle starts to move from a complete stop.

03

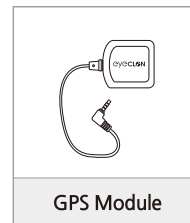
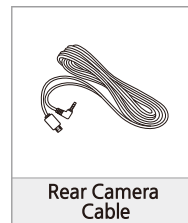
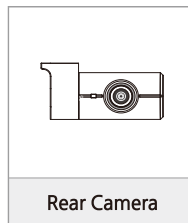
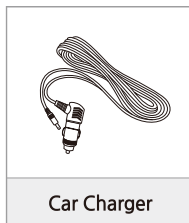
Product Overview

1. Package Components

- ※ Check to see if any components are missing.
- ※ The product and manual contents can be changed or modified at anytime without prior notice for improvements or customization.
- ※ Optional parts and accessories are sold separately.

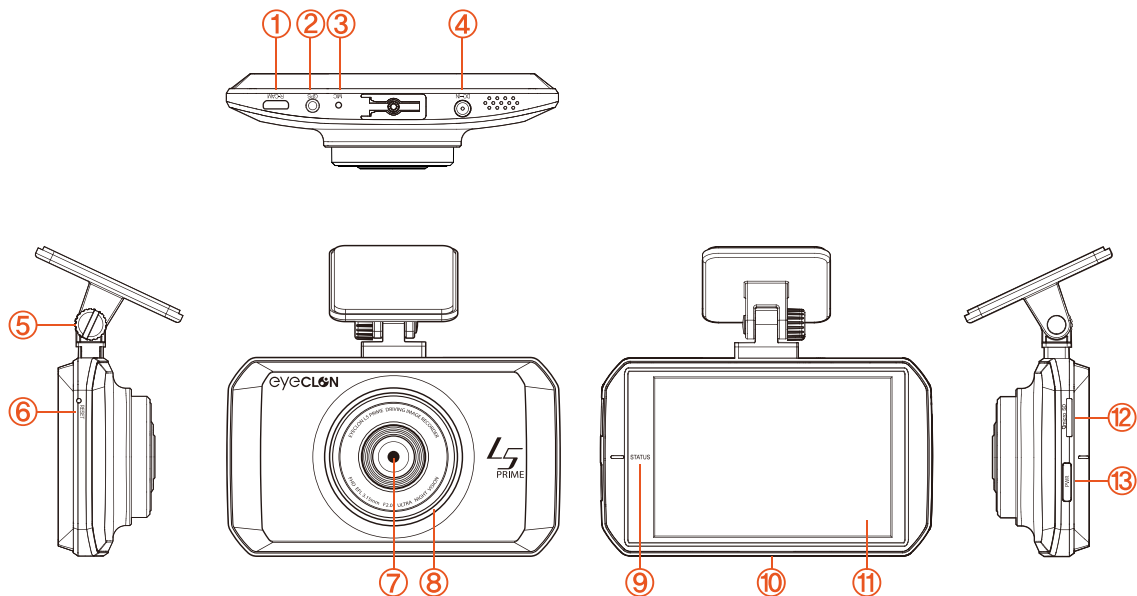


■ Option



2. Product Overview

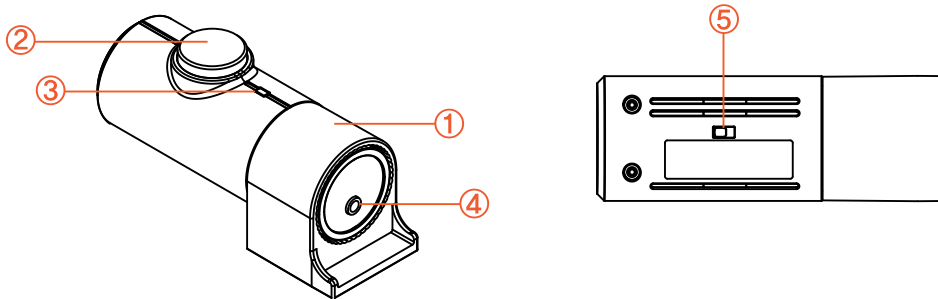
■ Main Unit (Front Camera)



■ Main Unit (Front Camera)

① R-CAM	Rear camera port
② GPS Port	GPS module port
③ MIC	Microphone for voice and audio record
④ DC-IN	Power cable port
⑤ Mount	Installation mount
⑥ RESET	Reset button
⑦ Camera Lens	Front camera for video recording
⑧ Front LED	Indicates parking status and provides security effect
⑨ STATUS	Notification for recording
⑩ Speaker	Voice guidance
⑪ LCD Screen	3.5" TFT screen for live view, playback, menu operation
⑫ Micro SD Card	Memory card slot (check for insert / remove direction)
⑬ Power / Manual Record	Press more than 3 secs : Power ON/OFF Press less than 3 secs : Manual Record

■ Rear Camera



① Mount	Installation mount
② Camera Lens	Rear camera for video recording
③ LED	Indicates vehicle is equipped with dash cam
④ Mini USB Port	Mini USB port to connect the main (front camera) unit
⑤ Mirror Switch	Mirror feature to change left / right view of the rear camera ※ Turn the dashcam off, disconnect the rear camera, and operate the mirror switch

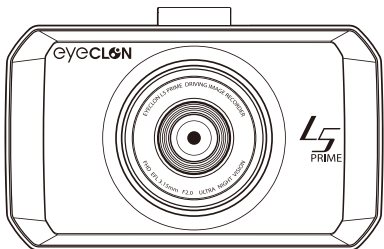
04

Device Installation

< Caution >

- It is dangerous to operate this device while driving.
- Please check if the Micro SD card is inserted correctly before connecting to power.
- Make sure the installation area is clean.
- Disconnect the power cable if you are not using the device for a long period of time.
- Handle the device with care. Do not drop the product as it may not function properly.
- Please make sure that the device is maintained in the suggested operating temperatures between -4° ~ 140°F.
During extreme high temperatures or hot weathers, parking indoors is suggested.

1) Insert / Remove Micro SD Card



← Insert
→ Remove

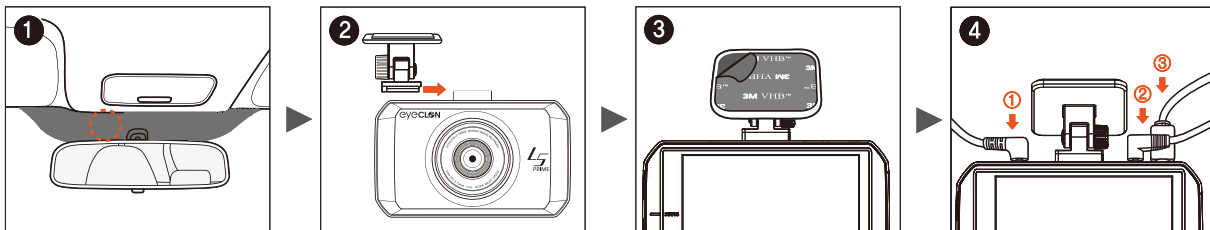


Do not apply excessive force on the Micro SD card or insert it in the wrong direction.

- Refer to the above image and check the direction before inserting the Micro SD card into the slot.
- Push the Micro SD card all the way.
- When the power is on, you will hear a voice guide informing the Micro SD card has been inserted correctly.

- ※ Do not apply excessive force on the Micro SD card or insert it in the wrong direction
- ※ Push the Micro SD card until you hear a click sound or recording will not start.
- ※ Make sure there are no particles on the Micro SD card.
- ※ It is recommended to use the Micro SD card with this device only.
- ※ Do not remove the Micro SD card when the device is operating.
- ※ Backup the video files (PC, USB) periodically.

2) Main Unit Installation

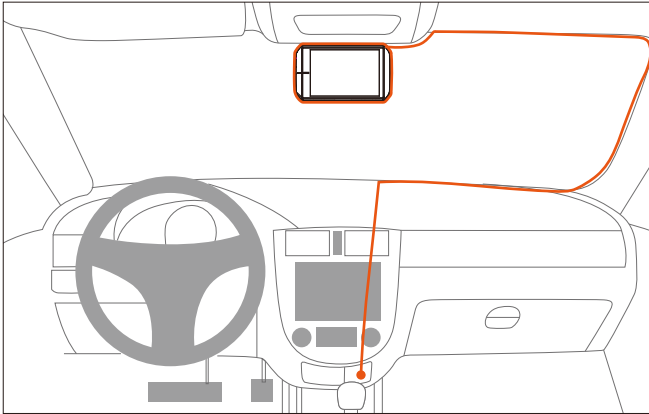


1. Select and clean the area where the product will be installed.
2. Connect the main device and the mount.
3. Remove the double sided tape and attach the device.
4. Connect the rear camera and GPS cables first, then connect the power cable.

(① Car Charger / Hardwire Cable ② GPS Cable ③ Rear Camera Cable)

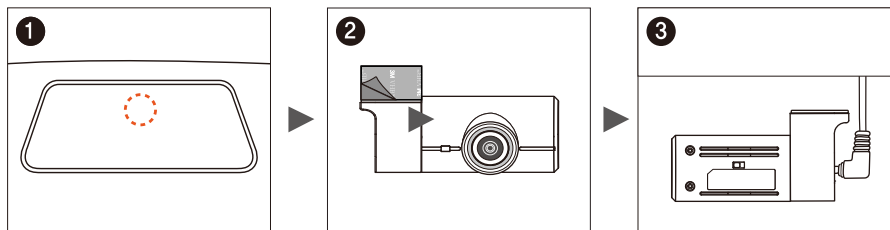
- ※ Before installation, make sure the engine is turned off.
- ※ Do not install the device that interferes with the driver's vision.
- ※ Make sure the installation area is cleaned.

- Connecting to power (using car charger)



※ Dashcam's power can be still supplied with the ignition turned off based on the model and make of the car. This can cause battery discharge in the vehicle.

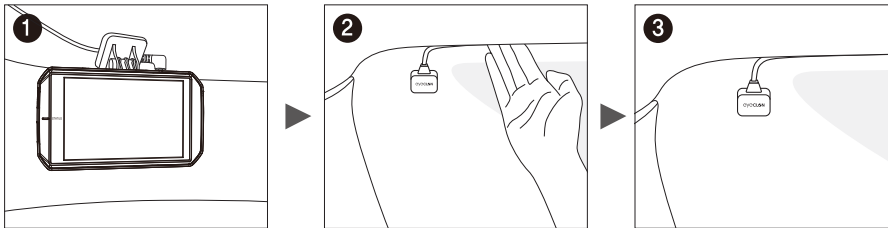
3) Rear Camera Installation (optional)



1. Select and clean the area where the product will be installed.
2. Remove the double sided tape and attach the device.
3. Connect the rear camera and the cable.

- ※ Before installation, make sure the engine is turned off.
- ※ Make sure the installation area is cleaned.
- ※ Turn the main power off to use the rear camera's mirror function.
- ※ Make sure the installation area doesn't interfere with the window's infrared rays.

4) External GPS Module Installation (Optional)



1. Connect the external GPS module to the right connector in the device.
2. Organize the cable lines across the car's ceiling.
3. Remove the double sided tape and attach the module.

- ※ Before installation, make sure the engine is turned off.
- ※ Make sure the installation area is cleaned.

05

Basic Operation

1) Main Menu



► Recording stops in ADAS, Main Menu.

①	Front / Rear View Front live view
②	Front / Rear View (optional) Front and rear live view (PIP mode)
③	Rear View (optional) Rear live view
④	Wi-Fi OFF * Click to turn Wi-Fi ON and connect to mobile phone's APP for real time live screen. * 1 person can access the APP at a time. * Feature is available only when Wi-Fi is ON.
⑤	ADAS Safe Driving Guide (LDWS / FCWS / FVSA)
⑥	Main Menu File List / Display Timeout Settings / Audio Settings / System Settings / Dashcam Settings

1. Using the Touch Screen

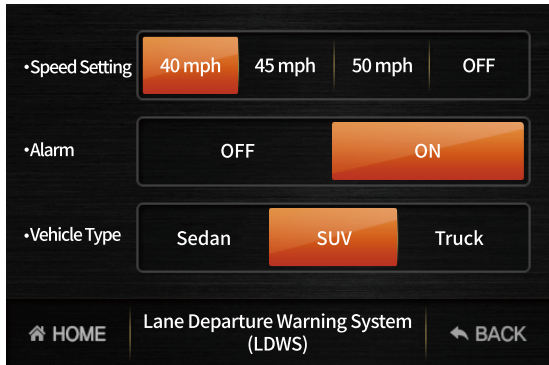
2) Live View (Front View)



- ▶ Touch the LCD to use front view / rear view / PIP features (Rear camera needs to be connected for rear view feature to work)

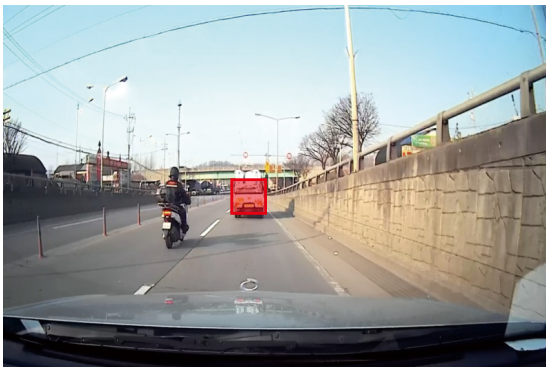
①	Current Date and Time Main Menu → System Settings → Time Settings * Automatic setting if GPS is connected
②	GPS Status GPS ON / OFF
③	Voice & Audio Record Settings → Audio Settings MIC ON : recording / MIC OFF : not recording
④	Wi-Fi Status * Connect: Wi-Fi On / Disconnect: Wi-Fi Off Dashcam Wi-Fi Identifier Number (SSID) * Used to identify dashcam Wi-Fi (example: 106d)
⑤	Main Menu Main menu screen

3) ADAS - Lane Departure Warning System (LDWS)



- ▶ If the vehicle is outside of lane, red line is shown on the screen and notifies the driver with a warning alert.
- ▶ Enabling the feature
 - Speed Setting(mph) : 40mph, 45mph, 50mph, OFF
(Speed Setting(km/h) : 60km/h, 70km/h, 80km/h, OFF)
- ※ In order for LDWS to operate in speed setting mode, GPS needs to be connected.
LDWS will operate regardless of speed setting if GPS is not connected.
 - Alarm : OFF / ON
 - Vehicle Type : Sedan / SUV / Truck
- ※ ADAS features' accuracy can be affected by conditions below
continuous operation of wipers, heavy reflection from the window, driving at night, through tunnels,
heavy rain and snow, road and environmental conditions

3) ADAS - Forward Collision Warning System (FCWS)



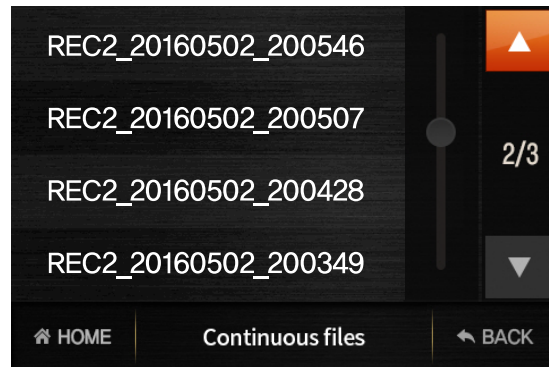
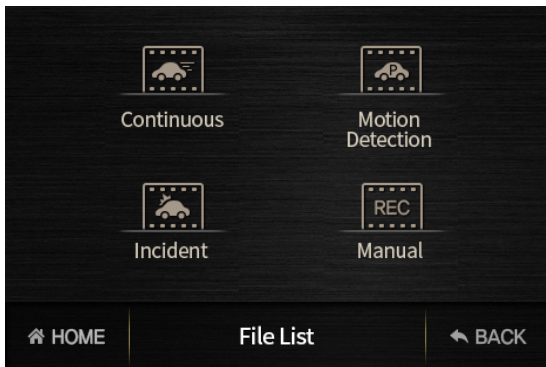
- ▶ If the front vehicle is too close, red box is shown on the screen and notifies the driver with a warning alert.
- ▶ Enabling the feature
 - Speed Setting(mph) : 40mph, 45mph, 50mph, OFF
 - (Speed Setting(km/h) : 60km/h, 70km/h, 80km/h, OFF)
- ※ **This feature operates if GPS is connected.**
- ※ **FCWS may not operate correctly if the distance between the front car is within 9ft (3m).**
- ※ **ADAS features' accuracy can be affected by conditions below**
continuous operation of wipers, heavy reflection from the window, driving at night, through tunnels,
heavy rain and snow, road and environmental conditions

3) ADAS - Front Vehicle Start Alarm (FVSA)



- ▶ If the front vehicle starts to move from a complete stop, “GO” message is shown on the screen.
- ▶ Enabling the feature
 - Select ON / OFF
- ※ FVSA may not operate correctly if the distance between the front car is more than 9ft (3m).
- ※ ADAS features' accuracy can be affected by conditions below
continuous operation of wipers, heavy reflection from the window, driving at night, through tunnels,
heavy rain and snow, road and environmental conditions

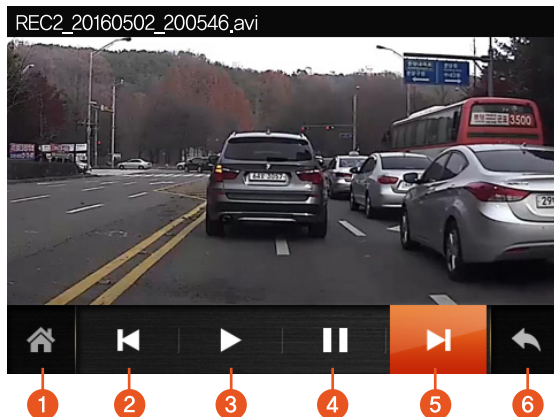
4) Main Menu - File List



- ▶ Recording Types : Continuous / Motion Detection / Incident / Manual
- ▶ Continuous Record : recording front / rear view while driving
- ▶ Motion Detection Record : motion detection while vehicle is parked
- ▶ Incident Record : recording and or collision incident while driving or parked
- ▶ Manual Record : manual record by pressing the main power button (less than 3 secs)
- ▶ Select the files to play

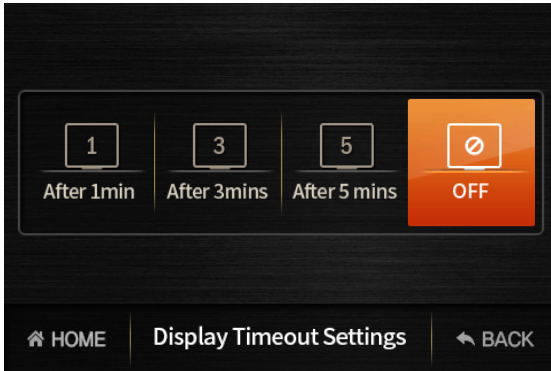
1. Using the Touch Screen

4) Main Menu - File List



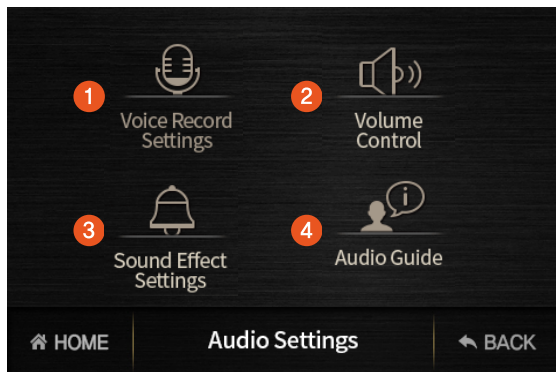
①	HOME Go back to live view
②	PREVIOUS Play previous file
③	PLAY Play file
④	STOP Pause
⑤	NEXT Play next file
⑥	BACK Back to previous screen or menu

4) Main Menu - Display Timeout Settings



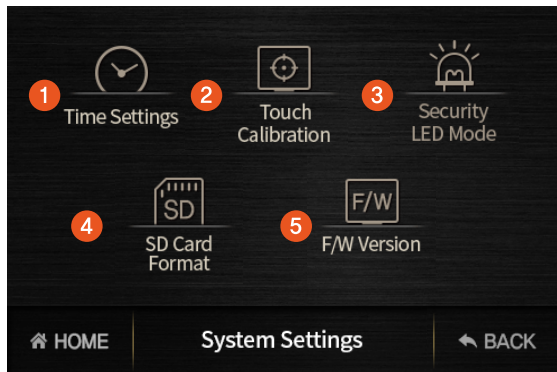
- ▶ Based on the setting, LCD will turn off after 1min / 3mins / 5mins from live view screen,
OFF : LCD is on while driving

4) Main Menu - Audio Settings



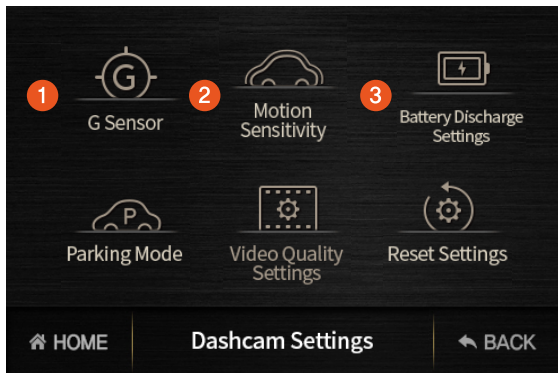
①	Voice Record Settings Voice record using the microphone - ON / OFF
②	Volume Control Set volume levels to Low / Mid / High
③	Sound Effect Settings Enable / disable sound effect setting - ON / OFF
④	Audio Guide Enable / disable audio guide feature - ON / OFF

4) Main Menu - System Settings



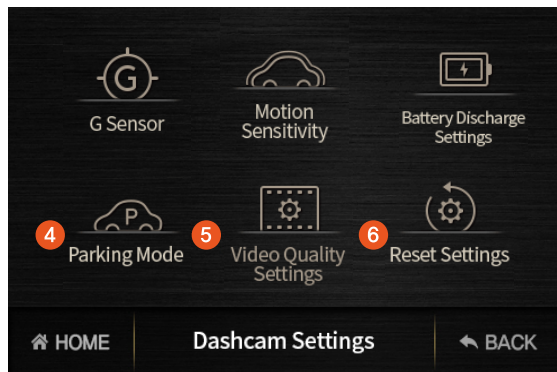
①	Time Settings System's time setting * set year / month / day / hour / min / sec using +, - key
②	Touch Calibration Resetting the touch screen
③	Security LED Mode Enable / disable the LED on the main unit - ON / OFF
④	SD Card Format Format Micro SD Card * recommended to backup the saved video files before format
⑤	F/W Version Check the current firmware version

4) Main Menu - Dashcam Settings



①	G-Sensor This feature senses incidents while driving or parked and records them - When a incident is detected, driver will be notified with a tone alert and recording will start. - Enable the sensitivity level by low / mid / high
②	Motion Sensitivity - Detects motion while the vehicle is parked and records them - Enable the sensitivity level by low / mid / high - This feature operates when the device is connected with hardwire cable. ※ It will not operate if the device is connected with cigar jack cable. ※ If the vehicle is parked in a covered or dark area, the motion sensor might not operate properly.
③	Battery Discharge settings - If the vehicle's battery falls below the indicated value, the ignition will not start. ※ The value may vary based on the vehicle's make and model. - This feature measures the voltage (battery) real time and prevents the vehicle to be discharged. - Enable the feature by 11.8V/23.6V, 12.0V/24.0V, 12.2V/24.4V, 12.4V/24.8V - Default setting is "12.2V / 24.4V" - This feature operates when the device is connected with hardwire cable. ※ It will not operate if the device is connected with cigar jack cable.

4) Main Menu - Dashcam Settings



④	Parking Mode <ul style="list-style-type: none">- Motion detection record while vehicle is parked- This feature operates when the device is connected with hardwire cable.- ON / OFF to use the feature- Select OFF and the device will not operate in parking mode※ It will not operate if the device is connected with cigar jack cable.
⑤	Video Quality Settings <ul style="list-style-type: none">- Able to select the recording video quality for front / rear camera- Enable the video quality by low / mid / high- Based on the video quality, the recording time may vary* for example : high quality → shorter recording time, higher quality low quality → longer recording time, lower quality
⑥	Reset Settings <ul style="list-style-type: none">- Reset settings to factory settings (except for recorded files)- Enable the feature by pressing the menu

2. Voice Guide Scenario

No.	Scenario	Description
1	Device starts	Drive safely today, please
2	Continuous recording starts	Continuous-recording starts
3	GPS connection	GPS is on
4	Unreadable Micro SD card	Insert memory card, please
5	Format Micro SD card	Memory card will be formatted
6	Restart system	System will reboot
7	Main Menu / File search in APP	Recording will stop
8	Turn off system	System will shut down
9	Parking mode	Recording-in-parking mode starts
10	Need to format Micro SD card	Memory card required to be formatted
11	Incident detection	(Sound Effect)

3. LED Indicator Light

No.	Description	Rear LED	Front LED
1	Power On	On (red)	On (blue)
2	Continuous Record	blinks for 1,5 sec (red)	blinks for 1,5 sec (blue)
3	Record during Parking	blinks for 1,5 sec (red)	blinks every 1,5 sec (blue)
4	Event Record (incident / manual / motion / incident during parking)	blinks for 0,3 sec (red)	blinks for 0,3 sec (blue)
5	SD card, system error / system update	On (red)	On (blue)
6	System Off	Off	Off

4. File List Management

- ▶ Recorded files are saved in Micro SD card.
- ▶ Files are saved in the same sizes due to format free technology.
Continuous : 80MB / Parked, Motion, Incident, Manual : 40MB
- ▶ In order to use the format free technology at best, a folder is not created in the Micro SD card.
- ▶ Recorded files are saved in Micro SD card by date and hour.

REC1_20160506_110707.avi

File Name Camera Channel Date Time
(1: front / 2: front & rear)

File Name	Meaning	File List
REC	Continuous Record	Continuous File
MOT	Record during Parking (motion detection)	Motion Detection File
EVT	Incident during driving (Incident - Continuous)	Incident File
IMP	Incident during parking (Incident - Parking)	
MAN	Manual record	Manual Record File

4. File List Management

- ▶ Recording Time : Format Free Technology allows the file sizes to be preset.
Recording time may vary based on the video quality. (refer below)

Front / Rear		Type	Front Camera Resolution			
			High	Mid	Low	
1CH (front only)		Continuous	1min 18sec	1min 43sec	2mins 34sec	
		Incident-Continuous Incident-Parking Parking Manual	38sec	51sec	1min 16sec	
2CH (Rear Camera Resolution)		High	Continuous	39sec	44sec	52sec
			Incident-Continuous Incident-Parking Parking Manual	19sec	22sec	26sec
		Mid	Continuous	44sec	52sec	1min 2sec
			Incident-Continuous Incident-Parking Parking Manual	22sec	26sec	31sec
		Low	Continuous	52sec	1min 2sec	1min 18sec
			Incident-Continuous Incident-Parking Parking Manual	26sec	31sec	39sec

5. Firmware Update

- ▶ Turn the device off and remove Micro SD card
- ▶ To format Micro SD card, connect PC and Micro SD card (File System: FAT 32 / File Size: 64KB)
- ▶ After format is completed, copy the updated file on Micro SD card
- ▶ Insert the Micro SD card in the device and turn the device on and update will start.
- ▶ Once the update is complete, recording will start.

1) Select Micro SD Card

Select Micro SD Card (EYECLON) in My Computer
Right click and select "Format"

2) Micro SD Card Format

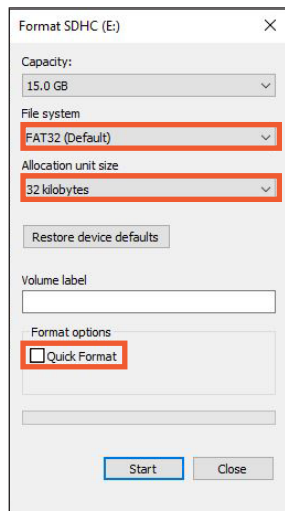
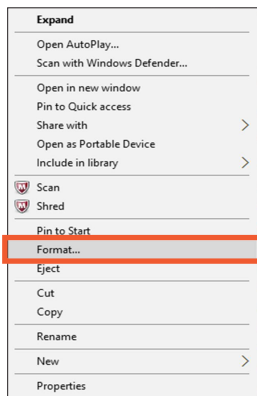
In the Disc Format Window, select the :

- ▶ File System : FAT32
- ▶ File Size : 32KB
- ▶ Uncheck "Quick Format"

3) Copy the Update File to Micro SD Card

Place the file L3-POP-V1.00-000.img file into the Micro SD card that has been already formatted and delete it.

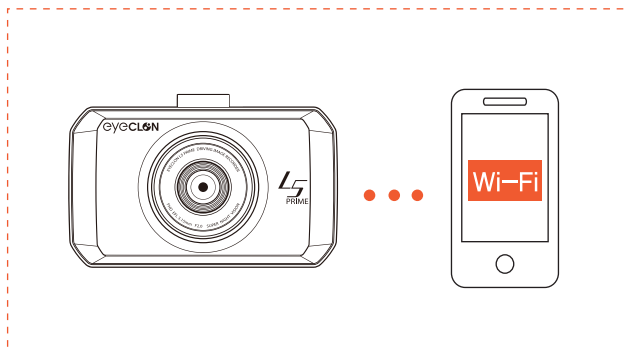
※ file version can change based on each update.



06

APP Operation

? Wi-Fi APP is?



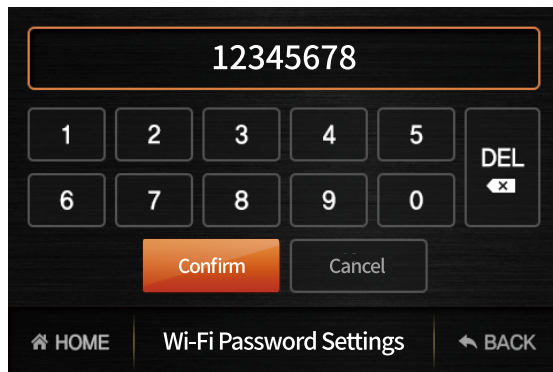
- ▶ Mobile APP is used to play video files and real time live view.
- ※ APP is accessible when the device is recording continuously while driving.
- ※ APP is not accessible in ADAS mode, Menu mode or in Parking mode.

2. Connecting Wi-Fi & Using APP

1) Connect Wi-Fi



- ① Select “Wi-Fi OFF” to register Wi-Fi
- to connect : Wi-Fi ON / to disconnect : Wi-Fi OFF
 - Wi-Fi disconnects in parking mode.
 - When the system restarts Wi-Fi’s status will automatically be “Wi-Fi OFF”.

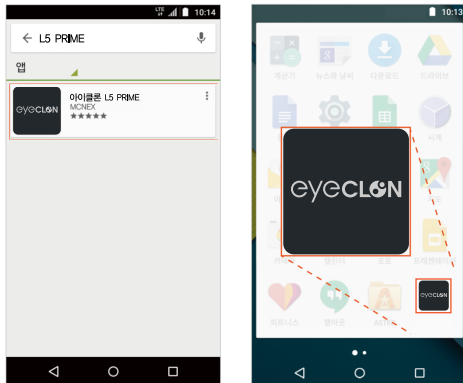


- ② Check for Wi-Fi password (ex : 12345678)
- Main Menu → System Settings → Wi-Fi Password Settings
 - It is recommended to change the password for security purposes.

2. Connecting Wi-Fi & Using APP

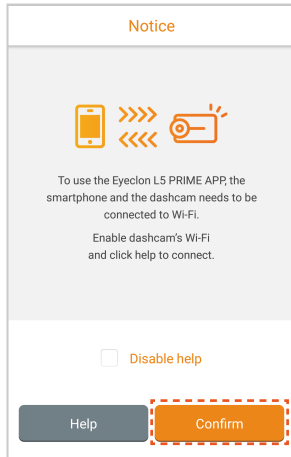
2) Download and Install Mobile Application

- Mobile APP is used to video files and real time live screen.
- Scan the QR code (right) with the mobile phone or search and download “L5 PRIME” from Play Store (Android) and App Store (iOS)

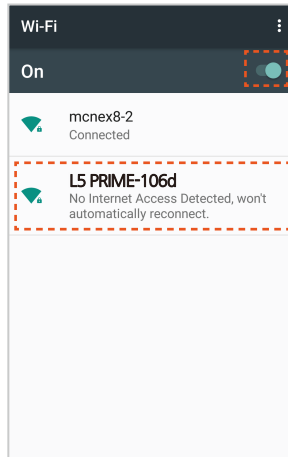


- ※ Android version - 4.0 or higher / iOS version - 8.4 or higher
- ※ Searches only when dashcam's Wi-Fi is “ON”.
- ※ Able to access the APP one mobile phone at a time.
- ※ APP is not accessible in ADAS, Main Menu or in Parking mode.
- ※ Stability of Wi-Fi connection varies based on the service provider.
- ※ APP is accessible when the device is recording continuously while driving.

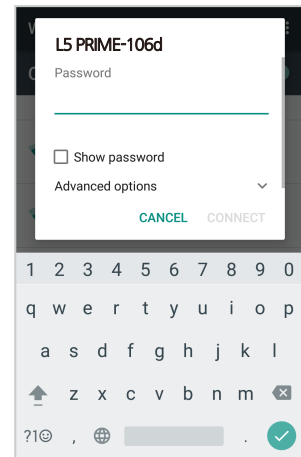
3) Device Registration for Android



- ① Click “Confirm”. (If you click “help”, check the contents and click “settings”).



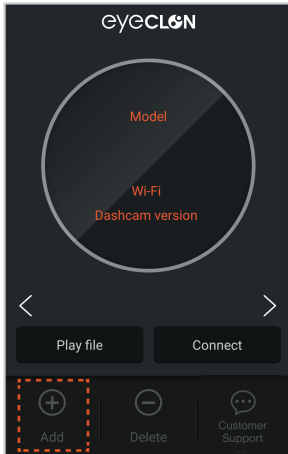
- ② Make sure the phone's Wi-Fi is ON and select the L5 PRIME Wi-Fi from the SSID list.
(example : L5 PRIME-106d)



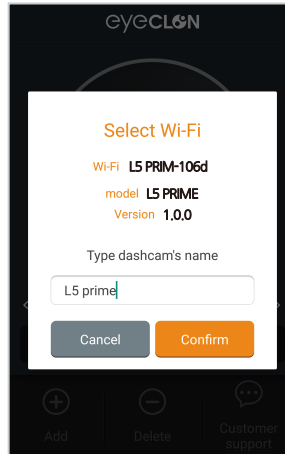
- ③ Enter the password from “Wi-Fi Password Settings” menu.(ex : 12345678)

- ※ Stability of Wi-Fi connection varies based on the service provider.
- ※ Wi-Fi SSID is located next to the device's name L5PRIME.

3) Device Registration for Android



④ Select “Add” button from the APP.

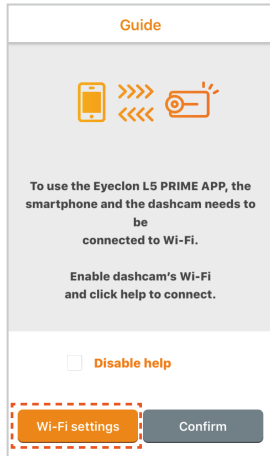


⑤ Enter the name of your device and click “Confirm”.

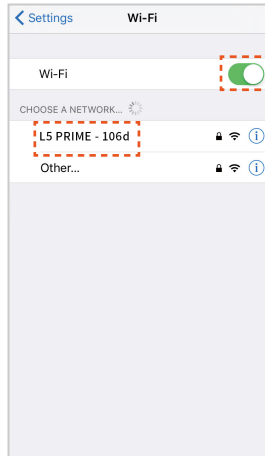


⑥ Click “Connect” and complete device registration.

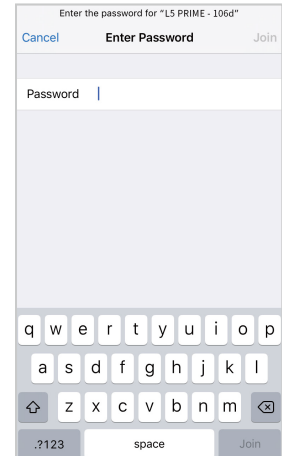
4) Device Registration for iOS



① Click "Wi-Fi settings".



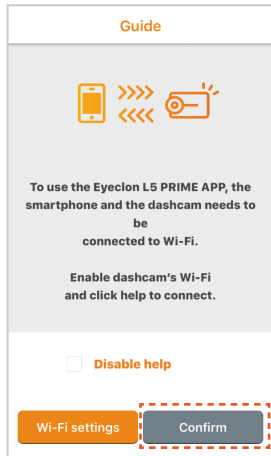
② Make sure the phone's Wi-Fi is ON and select the L5 PRIME Wi-Fi from the SSID list. (example : L5 PRIME-106d)



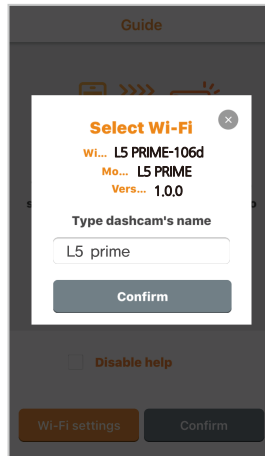
③ Enter the password from "Wi-Fi Password Settings" menu.(ex_12345678)

- ※ Stability of Wi-Fi connection varies based on the service provider.
- ※ Wi-Fi SSID is located next to the device's name L5PRIME.

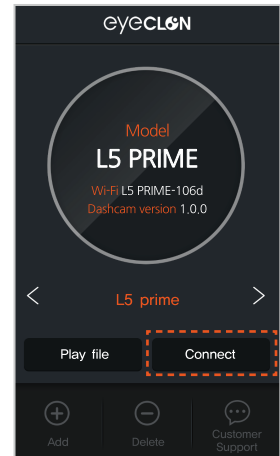
4) Device Registration for iOS



- ④ Click “confirm” after Wi-Fi is connected.



- ⑤ Enter the name of your device and click “Confirm”.



- ⑥ Click “Connect” and complete device registration.

5) Using the APP - disconnected



①	Wi-Fi : Wi-Fi SSID
②	Dashcam's firmware version
③	Play file : able to play files saved in mobile phone * available even if the mobile phone is not connected to the dashcam
④	Connect : connect to dashcam * Select the L5 PRIME Wi-Fi from the SSID list (example : L5 PRIME-106d)
⑤	Add / Delete : add and delete dashcam
⑥	Customer Support

2. Connecting Wi-Fi & Using APP

5) Using the APP - connected



⑦	Live view : live screen view using the mobile phone's APP
⑧	Search file / download : play file stored in Micro SD card from dashcam
⑨	Replay notice : Wi-Fi settings help guide
⑩	Settings : Dashcam's settings *System will restart if changes are made.

6) Cautions when using the APP

※ Check the following if Wi-Fi is not connected to the device

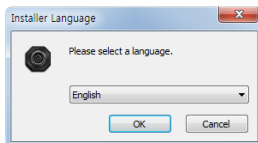
- If Wi-Fi on the device is on
- L5PRIME is selected on the smartphone's Wi-Fi settings
- If password is correct
- If only one smartphone is connected to the device (one smartphone : one device at a time)
- Depending on the model of the phone, it may automatically connect to LTE (or 3G)
if the Wi-Fi signal is weak (disable the feature in settings - applies in Android)

07 EYECLON Viewer

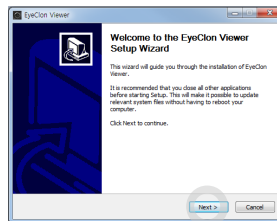
1) Viewer Installation

Download the setup.exe file at eyeclon.com or use the pre-installed in the Micro SD card and follow the steps like below.

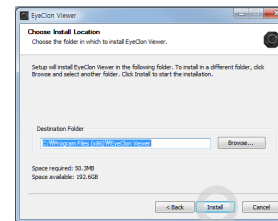
①



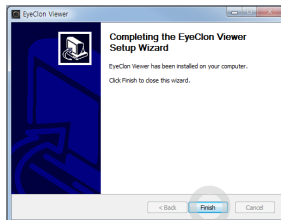
②



③



④



※ System Requirements

- Windows XP or higher
- Dual Core 2.8GHz or Intel i5 2.0GHz or higher
- IE 9.0 or higher
- Direct3D 9 graphic

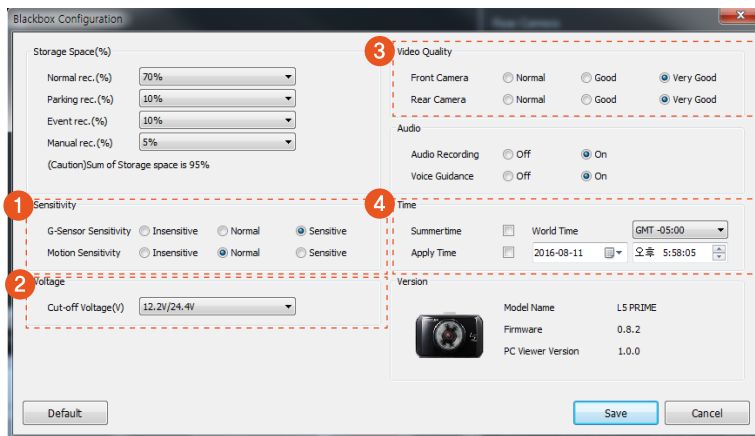
2) Main Screen Overview



2) Main Screen Overview

①	Settings
②	Save As : saving recorded files
③	Screen Capture : allows to capture screen during playback
④	Front Camera : playback front camera's files
⑤	Front - LEFT/RIGHT UP/DOWN FULL SCREEN CHANNEL CHANGE
⑥	Rear Camera : playback rear camera's files
⑦	Select Language / Homepage / Program Info
⑧	Rear - LEFT/RIGHT UP/DOWN
⑨	Select Micro SD Card Folder
⑩	GPS Information : Recognize vehicle speed and location
⑪	G-Sensor Information
⑫	Video Control Buttons
⑬	File List

3) Device Settings



①	Sensitivity : set the collision sensitivity level by High / Mid / Low Motion Sensitivity: set the motion detection sensitivity level by High / Mid / Low
②	Voltage : prevents battery to discharge in parking mode
③	Video Quality : contrast and clarity settings in video mode
④	Time : set the current time in system settings * If GPS is not connected, manually update the current time. (GMT, daylight savings)

08 Others

1. Product Specifications

Item	Description
Model	L5 PRIME
GPS	External GPS port
LCD	3.5" TFT LCD
Frame Rate	Up to 30fps (front / rear: 1080p)
Resolution	Front / Rear: FHD (1920x1080P)
Acceleration Sensor	3 Axis Acceleration Sensor
Input Power Source	DC 12/24V
Audio / Speaker	Embedded microphone, speaker
Auxiliary Power Unit	Super Capacitor

Item	Description
Size / Weight	104 x 65.5 x 30.25mm / 89.5g 4 x 2.6 x 1.2in / 3.14oz
Capacity	Micro SD Card 16GB / 32GB / 64GB (FAT32 format)
Operation and Storage Temperature	-20° ~ 60°C / -4° ~ 140°F 0° ~ 50°C / 32° ~ 122°F
Camera	Front: 1/2.8" CMOS Color Image Sensor Rear: 1/3" CMOS Color Image Sensor
Recording Mode	Continuous Record Incident Record(driving, parked) Motion Detection Record Manual Record

Condition	Description
No Power	Check if power cable is properly connected. Check if power is ON. Unplug the power cable and reconnect after 3 mins.
LCD Display doesn't turn ON	LCD display doesn't turn on in parking mode. LCD is ON during continuous mode.
Unable to record Audio / Voice	Check if voice record settings is ON in audio settings menu.
Unable to record during parking	Check of parking mode is ON in dashcam settings menu.
Unable to hear Audio / Voice	Check volume control in audio settings menu.
Touch Screen is not working	Reset the feature in touch calibration menu.

3. Limited Warranty on Parts & Labor

Eyeclon provides a warranty to the original purchaser of a new Product against defects in workmanship and materials for a period of one (1) year. If a product covered by this warranty is determined to be defective within the warranty period, Eyeclon will either replace or repair the product at its sole option and discretion.

Products determined defective must be sent to an Eyeclon service center to obtain warranty service.

PLEASE DO NOT RETURN PRODUCT TO POINT OF PURCHASE.

Pre-authorization and shipping instructions must be obtained before sending any product to warranty service center.

Proof of purchase in the form of a receipt is required to show that Product is within the warranty period and product must have original and legible serial number information.

TO OBTAIN WARRANTY SERVICE CONTACT EYECLON TECHNICAL SUPPORT AT :

[North America Region]

- email : techsupport@eyeclon.com
- phone : +1-949-623-8688 (9:00am to 6:00pm C.S.T. M-F)

[Global Support]

- email : eyeclon@mcnex.com
- phone : +82-70-4330-5745

This Warranty is subject to change without notice.

FOR COMPLETE AND UPDATED WARRANTY INFORMATION PLEASE VISIT:

www.eyeclon.com/warranties



L5 PRIME USER'S MANUAL

EYECLON Full HD Driving Image Recorder

www.eyeclo.com